

BLOCK JOINING MORTAR

TECHNICAL DATA SHEET



High Bond
Strength



No Shrinkage
Cracks



High Thermal
Insulation



Shock
Resistant



Superior
Adhesion



Impact
Resistant



Available in 30 & 40 kg Bag

PRODUCT DESCRIPTION

Block Joining Mortar (also referred to as Thin Bed AAC Joining Adhesive) is a high strength adhesive for quick and firm laying of AAC Blocks with thin joints. It is a factory mixed mortar made up of cement, graded sand and blended with polymers to impart high strength and water retention properties even when in thickness of 2-3mm layer.

SUITABLE FOR

- Aerated Light Weight blocks
- Concrete blocks
- Cement Mortar blocks/bricks
- Concrete hollow blocks
- Cellular Concrete blocks
- Fly Ash bricks

TECHNICAL DETAILS

Conforms to ASTM-C1660-09: IS 2250

PHYSICAL PROPERTIES @ 70° F (21° C)

Block Jointing Mortar mixed with water

PARAMETERS	RESULTS
Appearance	Grey Powder
Mixing Ratio	4 (Powder): 1 (Water)
Storage Conditions	Dry and clean moisture free area
Density	1400+50 kg/m ³
Layer Thickness	Min 3mm
Substrate Temperature	27°C
Pot Life	60 Min

PERFORMANCE PROPERTIES

ASTM-C1660 & IS 2250

PARAMETERS	REQUIREMENTS	RESULTS	TEST METHODS
Split Tensile Strength	>0.35N/mm ²	>0.4N/mm ²	ASTM-C1660-09
Compressive Strength	>7.5N/mm ²	>7.5 N/mm ²	IS 2250

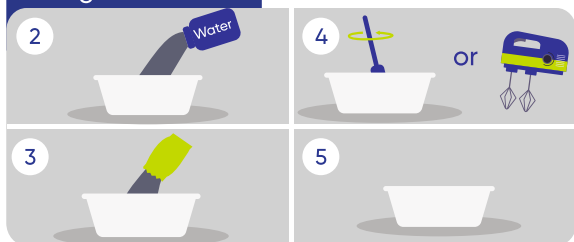
INSTALLATION

Surface Preparation



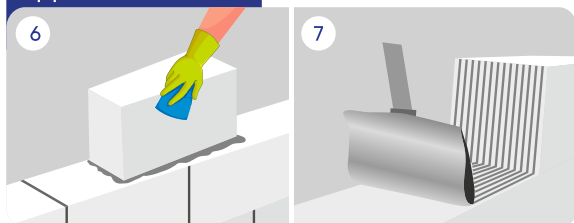
- The application surface/substrate must be free from loose particles or any other foreign material prior to commencement of work/application of any Magicrete products, pre-wet or dampen surface with good quality fresh water, if necessary.

Mixing



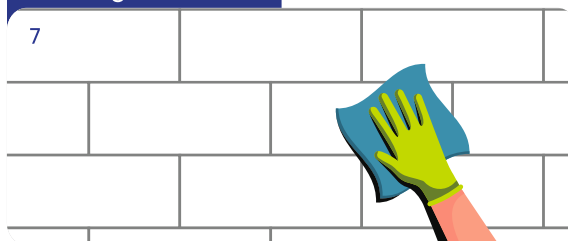
- Use approx., 6-8 litres of potable water in 30 kg and 8-10 litres of potable water in 40 kg of Magicrete Block Joining Mortar.
- It is utmost important to add Dry Mix Product to the water and not vice-versa. Mix the material by hand or using a slow speed electrical stirrer in a way that a uniform mixture (free from lumps) is formed.
- Allow the mixture to rest for 2-3 minutes for polymers to act, Remix the mixture before use.

Application



- Apply a thin uniform Layer of Magicrete Block Joining Mortar 2 to 3 mm thick on the clean & levelled surface of masonry units using proper trowel.
- Place the next course of masonry units on evenly jointing mortar bed in proper line & level.
- Each masonry unit shall be properly bedded and set in position by gently pressing with handle of trowel. Inside unit of the masonry unit shall be applied with mortar before the next unit is laid & pressed against it especially in case of bricks.

Cleaning



- Clean the excess material, if any immediately. Continue the procedure for the entire masonry work. Do not disturb the blocks setting for first 24 hours.

COVERAGE

- The product provides a coverage of 90 to 100 Sq. Ft. / 30 kg and 130 to 150 Sq. Ft./ 40 kg at 3 mm thickness, when used with AAC Blocks of 600mm x 200mm x 100mm size.
- * Coverage is based on smoothness and evenness of the substrate and the thickness of mortar used.



SHELF LIFE

Factory packed bags of Block Joining Mortar carries a shelf life of 12 months, if stored in cool & dry place. However, as temperature, humidity, water addition & other parameters vary from site to site, the information should be treated as a general guideline.

LIMITATIONS

- Cementitious substrates must be at least 28 days old.
- Do not exceed the recommended water dosage. Apply only to sound, prepared substrates. Do not exceed the maximum layer thickness.
- Protect freshly applied material from freezing and rain etc.

SAFETY PRECAUTIONS

- In case of eye contact, rinse immediately with plenty of clean water and seek medical advice.
- Wear suitable protective clothing, gloves, and eye/face protection.
- After contact with the skin, wash immediately with plenty of clean water.
- Keep out of reach of children.

IMPORTANT NOTES

- Stir well before use.
 - During cold weather protect finished work from use until fully cured.
 - Excess water on substrate must be removed by suitable means.
 - Always dampen the blocks, in all the situations: internal applications, when laying on hot days or when working in external areas. If a surface film forms, remove the adhesive and replace it with a fresh layer of the product.
- On completion, protect from rain for the first 24 hours.

magicrete®

magic behind happy homes



Magicrete Building Solutions Pvt. Ltd.

(ISO 9001 :2015, ISO 14001 :2015 & ISO 45001 :2018 Certified co.)



101 Ritz Square, Near Narmad Library,
Ghod Dod Road, Surat-395007 (Gujarat)

☎ 80 70 40 80 10

✉ info@magicrete.in

🌐 magicrete.in



SCAN FOR
DIGITAL COPY

